

VIVIENDA WEST CONDOMINIUM ASSOCIATION

699 Vivienda West Boulevard, Venice, FL 34293

HURRICANE PREPAREDNESS AND REFERENCE INFORMATION – 2023

To: All VWCA Unit Owners
From: VWCA Board of Directors
Date: August 28, 2023

The VWCA Board of Directors has gathered the following information to assist you in preparing for a hurricane or tropical storm this season.

If you are away from your Venice home during any storm event, please ensure that your home is secure and check in with the local person who takes care of your unit during your absence. Be sure that your hurricane shutters are in place if you have them, and that there are no items left outside that could become a missile in heavy winds, hurting someone or damaging property, i.e. outdoor furniture, garbage cans, recycling cans, bird baths, large planters, decorations, etc. Move all items from your lanai inside. If you are in Venice during the event, we suggest that you prepare your home and yard as recommended above. If you have renters or guests occupying your home/unit at this time please pass this information on to them.

NOTE: In a power outage, the garage doors will not open unless you or another unit owner are able to open them manually. An option would be to leave your vehicle outside of the garage, but then you run the risk of damage to your vehicle. Something to think about.

HURRICANE WATCH VS. HURRICANE WARNING DEFINITIONS & ANNOUNCEMENTS

Hurricane Watch: An announcement that hurricane conditions (sustained winds of 74mph or higher) are possible within the specified area. Hurricane Watch is issued 48 hours in advance of the anticipated onset of tropical storm force winds.

Hurricane Warning: An announcement that hurricane conditions (sustained winds of 74 mph or higher) are expected somewhere within the specified area. The Hurricane Warning is issued 36 hours in advance of the anticipated onset of tropical storm force winds

During emergency events, the Sarasota Herald Tribune offers free access to their on-line subscription with storm updates: <http://www.heraldtribune.com>

HELPFUL REFERENCES & GUIDES

[2023 Hurricane Guide \(venicegov.com\)](http://www.venicegov.com)

[National Hurricane Center \(noaa.gov\)](http://www.noaa.gov)

The Saffir-Simpson Hurricane Wind Scale is a 1 to 5 rating based only on a hurricane's maximum sustained wind speed. **This scale does not take into account other potentially deadly hazards such as storm surge, rainfall flooding, and tornadoes.**

The Saffir-Simpson Hurricane Wind Scale estimates potential property damage. While all hurricanes produce life-threatening winds, hurricanes rated Category 3 and higher are known as major hurricanes*. Major hurricanes can cause devastating to catastrophic wind damage and significant loss of life simply due to the strength of their winds. Hurricanes of all categories can produce deadly storm surge, rain-induced floods, and tornadoes. These hazards require people to take protective action, including evacuating from areas vulnerable to storm surge.

*In the western North Pacific, the term "super typhoon" is used for tropical cyclones with sustained winds exceeding 150 mph.

Category	Sustained Winds	Types of Damage Due to Hurricane Winds
1	74-95 mph 64-82 kt 119-153 km/h	Very dangerous winds will produce some damage: Well-constructed frame homes could have damage to roof, shingles, vinyl siding and gutters. Large branches of trees will snap and shallowly rooted trees may be toppled. Extensive damage to power lines and poles likely will result in power outages that could last a few to several days.
2	96-110 mph 83-95 kt 154-177 km/h	Extremely dangerous winds will cause extensive damage: Well-constructed frame homes could sustain major roof and siding damage. Many shallowly rooted trees will be snapped or uprooted and block numerous roads. Near-total power loss is expected with outages that could last from several days to weeks.
3 (major)	111-129 mph 96-112 kt 178-208 km/h	Devastating damage will occur: Well-built framed homes may incur major damage or removal of roof decking and gable ends. Many trees will be snapped or uprooted, blocking numerous roads. Electricity and water will be unavailable for several days to weeks after the storm passes.
4 (major)	130-156 mph 113-136 kt 209-251 km/h	Catastrophic damage will occur: Well-built framed homes can sustain severe damage with loss of most of the roof structure and/or some exterior walls. Most trees will be snapped or uprooted and power poles downed. Fallen trees and power poles will isolate residential areas. Power outages will last weeks to possibly months. Most of the area will be uninhabitable for weeks or months.
5 (major)	157 mph or higher 137 kt or higher 252 km/h or higher	Catastrophic damage will occur: A high percentage of framed homes will be destroyed, with total roof failure and wall collapse. Fallen trees and power poles will isolate residential areas. Power outages will last for weeks to possibly months. Most of the area will be uninhabitable for weeks or months.

[Hurricane Preparedness | Sarasota County, FL \(scgov.net\)](#) which has excellent resources for residents regarding Preparedness, Evacuation Procedures, and Shelters including:

- [Homeowners | Sarasota County, FL \(scgov.net\)](#)
- [Medical Needs Program | Sarasota County, FL \(scgov.net\)](#)
- [Disaster Planning for Animals \(Domestic and Rural\) | Sarasota County, FL \(scgov.net\)](#)
- [Transportation Plan \(Hurricane Evacuation Centers\) | Sarasota County, FL \(scgov.net\)](#) **Note:** the Venice Community Center is NOT an evacuation center. The only one in Venice is the Taylor Ranch Elementary School located at 2500 Taylor Ranch Trail in Venice, FL 34293. They are pet friendly.
- [Hurricane Evacuation Centers | Sarasota County, FL \(scgov.net\)](#)

[Know Your Evacuation Level \(arcgis.com\)](#)

EVACUATION SHELTERS – VWCA IS LOCATED IN EVACUATION LEVEL **C.** Per Sarasota County Emergency Center, stay tuned to your television and/or radio for announcements regarding the status of the hurricane and evacuation orders. If you have special needs, please call 941-861-5000 for assistance.

[Hurricane Evacuation Centers | Sarasota County, FL \(scgov.net\)](#)

Please don't hesitate to contact me at 774-200-7620 or Karen Campbell at 941-702-4107 with any questions or concerns.

Prayers that this hurricane season will be uneventful!!!

Warm regards,

Victoria M. Denault

Victoria M. Denault, President

Vivienda West Condominium Association, Inc. (VWCA)

Emergency Update: Idalia - Aug. 28, 2023

1 message

Sarasota County Government <communications@scgov.net>

Mon, Aug 28, 2023 at 1:39 PM

Reply-To: communications@scgov.net

To: venicevmd2012@gmail.com

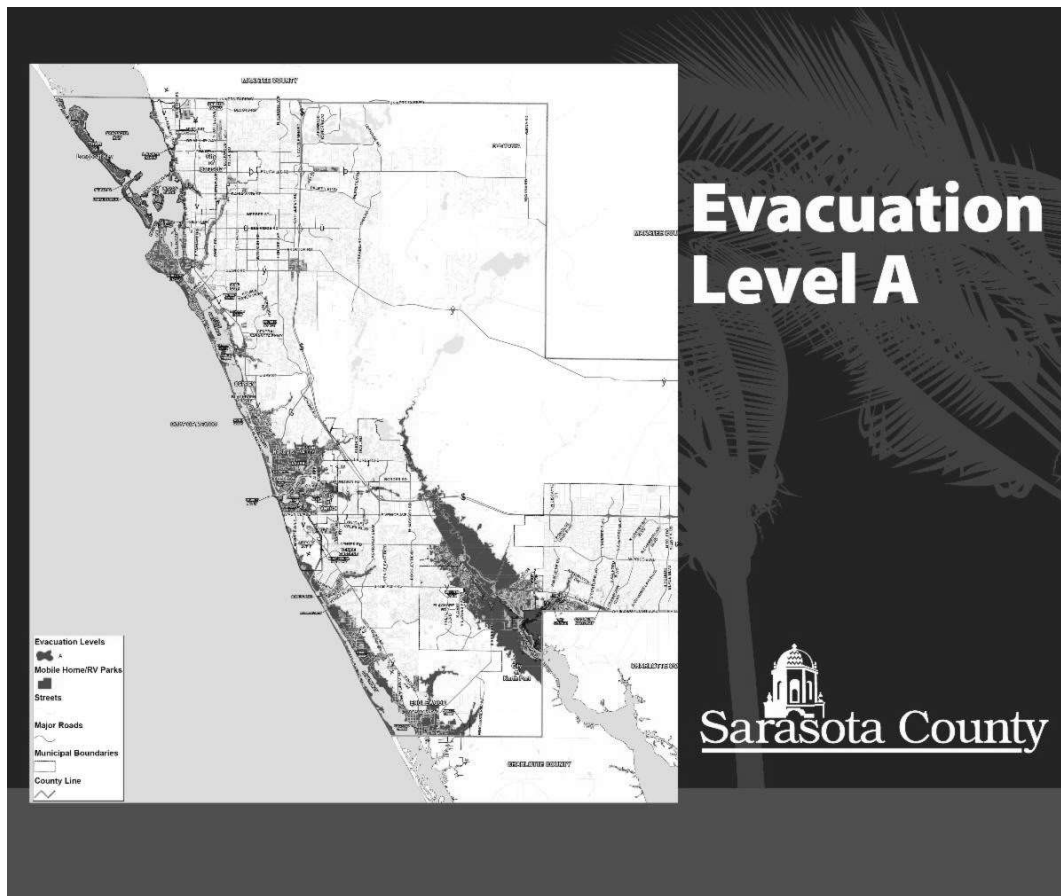
Monday, Aug. 28, 2023 1:30 P.M.

A banner with a dark background. On the left is the Sarasota County logo. On the right is a silhouette of palm trees. In the center, the words "EMERGENCY UPDATES" are written in large, bold, white capital letters.

EMERGENCY UPDATES

Emergency operation updates for Idalia

Evacuations



Out of an abundance of caution, Sarasota County is calling for the evacuation of Level A on **Tuesday, Aug. 29**. This includes vessels, RVs, mobile and manufactured homes. [Learn your level here.](#)

All general population evacuation centers will be open **beginning at 8 a.m.** Find more information including what to bring [here](#).

To view the latest press conference from the Emergency Operations Center, click [here](#).

[Here are some tips if you're sheltering in place.](#)

Government Operations

- **Sarasota County Government:** All offices will close today, Aug. 28, at 1 p.m. All offices will be closed Tuesday, Aug. 29, and Wednesday, Aug. 30.
 - The regular Sarasota County Commission meetings for Aug. 29 and 30 will be rescheduled.
 - Parks, Recreation and Natural Resources will be cancelling reservations for county facilities through Wednesday, Aug. 30.
 - Sarasota County public libraries will be closed through Wednesday, Aug. 30.
 - Sandbag operations will take place from 2-7 p.m. today, Aug. 28, and from 8 a.m. to 4 p.m. Tuesday, Aug. 29. Locations for both days follows:
 - Ed Smith Stadium, 2700 12th St., Sarasota.
 - Twin Lakes Park, 6700 Clark Road, Sarasota.
 - South County Fleet, 4571 SR 776/Englewood Road, Venice.

- **Limit 10 sandbags per vehicle.** Shovels and bags will be available onsite. Changes in weather patterns may impact sandbag operation times.
- **City of Sarasota:** No office closures have been announced.
- **City of North Port:** No office closures have been announced. The City of North Port has opened a self-serve sandbag station starting at 10 a.m. today, Aug. 28 at the Larry Thoennissen Athletic Fields behind the George Mullen Activity Center (1602 Kramer Way) at the end of City Center Boulevard. Bags, sand and shovels will be provided, with a limit of 10 bags per vehicle.
- **Town of Longboat:** No office closures have been announced. Self-serve sandbag operations are staffed at the Broadway Beach Access.
- **City of Venice:** City Hall and other city buildings are operating normal hours today, Aug. 28. Humphries Park and the South Jetty will be closed Tuesday, Aug. 29.
 - **Sandbags:** Sand is available on a first-come, first-served basis at Wellfield Park, 1400 Lucaya Ave., Venice. Bags can be picked up at the Public Works building, 1350 Ridgewood Ave., City Hall, 401 W. Venice Ave., or bring your own bag. This is self-service, shovels will be provided. Limit 10 bags per household.
 - **Trash and recycling:** Regular collection of trash, recycling and yard waste on Tuesday, Aug. 29. Have items at the curb by 7 a.m.. No collection Wednesday, Aug. 30.
- **Property Appraiser:** Closed on Tuesday, Aug. 29, and Wednesday, Aug. 30, Normal operations will resume on Thursday.
- **Tax Collector:** Closed Tuesday, Aug. 29, and Wednesday, Aug. 30. Please check www.SarasotaTaxCollector.com for service updates.

Residential Trash and Recycling Pick-up

There are no changes to today's Sarasota County trash and recycling pickup. Stay tuned for further updates in the coming days.

Sarasota County Schools Update

Out of an abundance of caution and due to the latest track of Tropical Storm Idalia, **traditional public schools will be closed on Tuesday, Aug. 29 and Wednesday, Aug. 30**, in order to function as evacuation centers. If your child is enrolled at a charter school, please check directly with your school for updates on closures. All after-school activities on Monday, Aug. 28, will take place as scheduled.

Updates will be sent out and posted at www.sarasotacountyschools.net/hurricane with all school-related information as it becomes available for the remainder of the week.

Register for Emergency Alerts

Sign up for emergency notifications by registering for [Alert Sarasota County](#), Sarasota County's mass notification system for rapid emergency updates. This service sends alerts via phone, text and/or email, depending on user preference.

Opt-in for alert subscriptions offered by the county or your local municipality:

- Alert Sarasota County – Sarasota County (unincorporated).
- Alert Sarasota County – City of Sarasota.
- Alert Sarasota County – City of North Port.
- Alert Sarasota County – City of Venice.
- Alert Sarasota County – Town of Longboat Key.

Download the free [Everbridge mobile app](#) to see all public notifications issued through the Everbridge alert system.



Visit our website for more storm updates.

Sarasota County Government
1660 Ringling Blvd., Sarasota, FL 34236
311

STAY CONNECTED



Sarasota County Government | 1660 Ringling Blvd., 3rd floor / Room 370, Sarasota, FL 34236

Unsubscribe venicevmd2012@gmail.com

Update Profile | Constant Contact Data Notice

Sent by communications@scgov.net powered by



Try email marketing for free today!

2023 HURRICANE GUIDE



PREPARE BEFORE

Hurricane season runs from June 1–November 30 in Southwest Florida. Hurricanes cost the state of Florida approximately **\$3.8 billion** in 2022. Proper preparation from these unavoidable disasters can save money and lives. Knowing the difference between hurricane watches and warnings could save a life. The time to prepare for a hurricane is now, well before a hurricane is forecast.

The City of Venice publishes this Hurricane Guide annually. Please contact the Public Information Officer for more information, at 941-882-7401 or email Lorraine Anderson at landerson@venicefl.gov. To arrange to have a speaker come to your organization to discuss hurricane preparedness, please contact the Venice Fire Department at 941-480-3030 or email venicefire@venicefl.gov.

WATCHES AND WARNINGS

Because outside preparedness activities become difficult once winds reach tropical storm force, the National Hurricane Center issues watches and warnings for specific areas of danger. Additional watches and warnings may be issued by local National Weather Service offices to provide detailed information on specific threats such as flash floods, floods, and tornadoes.

Issued **48 HOURS** in advance of anticipated onset.

WATCHES

Issued **36 HOURS** in advance of anticipated onset.

WARNINGS

STORM SURGE:

life-threatening inundation from rising water moving inland from the shoreline

STORM SURGE danger is **possible**

STORM SURGE danger is **expected**

TROPICAL STORM:

an organized system of strong thunderstorms with defined circulation and maximum sustained winds of 39–73 mph

TROPICAL STORM conditions are **possible**

TROPICAL STORM conditions are **expected**

HURRICANE:

winds that have reached a constant speed of 74 mph or higher and blow in a large spiral around a relative calm center known as the “eye”.

HURRICANE conditions are **possible**

HURRICANE conditions are **expected**



ACTION: • Prepare your home and review your plan for evacuation in case a Hurricane or Tropical Storm Warning is issued. • Listen closely to instructions from local officials.

ACTION: • Finish storm preparations and immediately leave the threatened area if directed by local officials. • Have a plan for where you will stay such as with family or friends, at a hotel or at a shelter.

EXTREME WIND WARNING extreme sustained winds of a major hurricane (115 mph or greater), usually associated with the eyewall, are expected to begin within an hour.

ACTION: • Take immediate shelter in the interior portion of a well-built structure.

PREPARE BEFORE



HURRICANE SCALE



CATEGORY **mph** **km/h** **Knots (kn)**

1

79-95
mph

119-153
km/h

64-82
kn

Minimal
Damage



2

96-110
mph

154-177
km/h

83-95
kn

Moderate
Damage



3

111-129
mph

178-208
km/h

96-112
kn

Extensive
Damage



4

130-156
mph

209-251
km/h

113-136
kn

Extreme
Damage



5

≥157
mph

≥252
km/h

≥137
kn

Catastrophic
Damage



DID YOU KNOW? At 45 mph winds, all bridges to Venice island will be locked DOWN (horizontal) – NOT in the “up” position.



PREPARE BEFORE

IMPORTANT CONTACTS

Call or text **911** for life-threatening emergencies.

Police Department non-emergencies:

941-486-2444

Fire Department non-emergencies: 941-480-3030

After hours: 941-882-7510

Water/sewer emergency: 941-486-2770

Power outage - FPL: 1-800-4-OUTAGE (468-8243)

City of Venice non-emergencies: 941-486-2626

Sarasota County Contact Center: 941-861-5000,
TTY 711 or 1-800-955-8771

Access County govt. services: Call 311 weekdays
or online at www.scgov.net/311

Red Cross SWFL Chapter: 941-379-9300

Animal Services: 941-861-9500

Solid Waste: 941-486-2422

Radio: WENG 1530 AM, WBRD 1420, WWPR 1490
AM, WSMR 89.1 FM, WSLR 96.5 FM

NOAA weather radio: FREQ: 162.40 Mhz
FIPS Code 012115

TV: Sarasota County Emergency Services on gov-
ernment access TV Comcast/Xfinity Channel 19
and Frontier Channel 32, SNN Comcast/Xfinity
Channel 6, ABC Channel 7

Online:

City of Venice: venicegov.com

- Follow us on Facebook at facebook.com/CityofVeniceFlorida
- Follow us on Twitter [@CityofVeniceFL](https://twitter.com/CityofVeniceFL)

NOAA National Hurricane Center:

www.nhc.noaa.gov

Division of Emergency Management:

www.floridadisaster.org

American Red Cross Hurricane Preparedness:

Redcross.org/prepare/disaster/hurricane

FEMA mobile app: Fema.gov/mobile-app

FEMA hurricane info: Ready.gov/hurricanes

FloodSmart campaign: floodsmart.gov

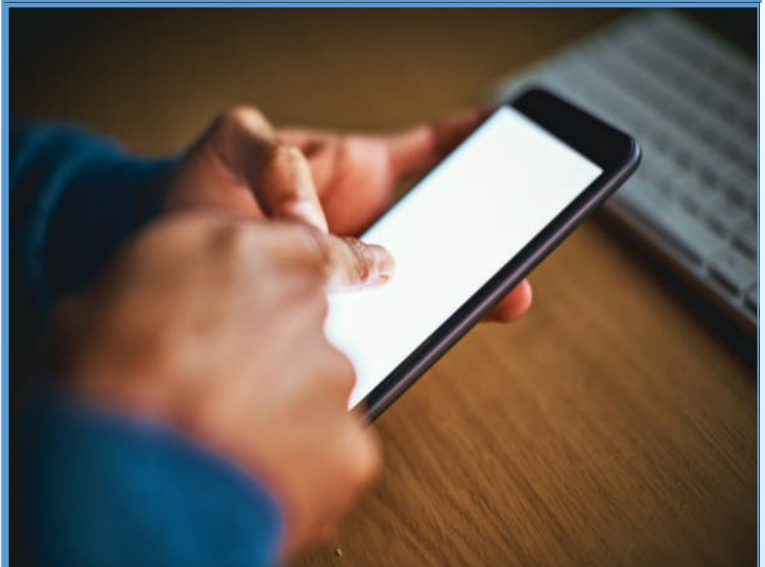
ALERT SARASOTA COUNTY

Sign up for Alert Sarasota County, a notification system that will call every signed up resident with an emergency message, as well as send emails and text messages. To sign up, go to the City's website: www.venicegov.com and click on Alert Sarasota County at the top of the homepage (above the search bar). Then go to the Sign Up tab or Jurisdiction Map to sign up. **You must sign up and a password and security questions are required.** If your phone rings during hurricane season, it could be the City with recorded information about emergency conditions, shelters or other items of interest.

2023 Hurricane Names

Arlene	Harold	Ophelia
Bret	Idalia	Philippe
Cindy	Jose	Rina
Don	Katia	Sean
Emily	Lee	Tammy
Franklin	Margot	Vince
Gert	Nigel	Whitney

Remember: When disaster strikes, the time to prepare has passed. ~ Steven Cyrus



PREPARE BEFORE

How the City Prepares for a Hurricane

When a hurricane watch is announced, the City of Venice activates its Comprehensive Emergency Management Plan.

Decision makers meet. Emergency services begin communicating with Sarasota County's Emergency Services department and plan accordingly in regards to the storm's intensity and track.

Pick up and tie down. Public Works tie down and collect any City-owned items, such as trash cans and street furniture, including benches in parks and at the South Jetty. Solid Waste division will collect trash until winds are too high for the activity to be safe. At that time, residents who have left trash and recyclables on the curb should bring the materials inside so they don't get blown away.

Preparations. City Departments begin their emergency preparations for continuity of operations. Sarasota County Emergency Management will determine when evacuation centers will open. The County's transportation plan for evacuation centers is activated (see page 12).

Drainage. Stormwater personnel ensure outfalls are properly functioning.

Notify contractors. 24 hours within the issuance of a hurricane watch all construction material must be secured.

Emergency declared. The City takes the necessary steps to coordinate and declare a state of emergency. This process is imperative and helps the

City receive reimbursement from Federal Emergency Management Agency (FEMA).

Preparations. As the hurricane tracks closer to our coast, necessary actions are taken to ensure all construction materials in the City have been secured.

EOC activation. Emergency Operations Centers for both the City & County communicate to procure and allocate resources and staff to better ensure continuity of operations and expedite recovery processes.

High importance. When winds reach a sustained 45 mph, emergency services will not be dispatched due to safety concerns from flying debris. Once winds subside, 911 resumes normal operations. ***Residents should still call 911 for any emergency, as calls are still recorded and placed on a priority list.***

Recovery. Once the storm has passed, the first effort toward recovery will center around health, safety and welfare. Public Safety and City Departments initiate post damage assessments. TFIT "Tactical First in Teams" begin clearing main roads to and from the City. Utilities employees will ensure lift stations and water pipes are operational. Generators will keep lift stations pumping. Airport personnel will

clear the runways of debris and make sure all is in operating order as quickly as possible in order to facilitate relief efforts by air.

Power. Florida Power & Light (FPL) will begin the power restoration process to residents and businesses without power. Through proactive measures, the City has secured back up power sources for critical facilities and infrastructures to ensure operations remain functional.

Debris management. Cleanup for storm debris will be done in order of need for health and safety. This can be a lengthy process depending on the severity and intensity of the storm.

The City of Venice understands the importance of providing a sound and functioning government and therefore has built an emergency management plan based on the pillars of mitigation, preparedness, response and recovery.

Please note: If City Hall is damaged or deemed unsafe to enter, citizens will be notified of an alternate location to conduct business.



PREPARE BEFORE

Secure Your Property

The following are suggestions for making property the most hurricane resistant it can be:

- Replace old windows with hurricane-resistant windows, or cover windows with wood boards or hurricane shutters. When wind forces from hurricanes break windows, the resulting updraft can lift the roof off the structure. The opening also allows water to come in from the storm, and broken glass can become projectiles.
- Secure large loose items in your yard. During high winds, loose items can become dangerous projectiles.
- Pick up all small loose items in the yard and bring them inside. In 80 mph winds, even small items can become dangerous projectiles.
- Do not put garbage out at the curb for collection. Once winds reach a certain speed, the county landfill will close and it will not be safe for trucks to operate. Garbage cans and bags left outside then become hazards in the wind.

Everyone should secure all outdoor belongings. It's part of being a good neighbor. Loose patio furniture, bird feeders, garden ornaments, tools, toys, solar lights, trampolines, and other items left in the yard can be blown into windows and through doors during hurricanes. When something penetrates a building, it can cause total collapse of the structure. Put all loose items indoors. The home you save may be your own.

- **Builders:** A City ordinance requires building contractors to secure all construction materials and equipment within 24 hours of the issuance of a hurricane watch. Penalties for not doing so include possible fines or jail time.

Protect Your Property With Flood Insurance

The City of Venice is an active participant in the National Flood Insurance Program Community Rating System. This allows City residents a 20% discount on flood insurance purchased through National Flood Insurance Program.

Property in Venice located along low-lying and coastal regions can be vulnerable to flooding. Please contact the City's Engineering Department at 941-882-7412 or stop by City Hall, located at 401 W. Venice Ave., to learn if your property is located in a flood zone. Flood Maps can be viewed by searching "flood map" in the search bar at venicegov.com.

Standard homeowner insurance policies do not include coverage for flood and wind. The National Flood Insurance Program offers flood insurance coverage to City residents. A 30-

day waiting period prior to the beginning of coverage is required.

As you prepare for hurricane season, contact your insurance agent to review your insurance coverage and information regarding the National Flood Insurance Program.

In the event you evacuate during a storm, remember to take your important documentation, including your insurance policies, insurance carrier contact information, and pictures of your home and contents, in a waterproof container.

Insure your home for its reconstruction cost, not its real estate value. If you rent, you also need insurance to protect your belongings. Set aside funds to pay your hurricane deductible. Inventory your home's contents to accurately price coverage.

The integrity of the stormwater drainage system must be protected to ensure proper functioning during severe weather. It is illegal to obstruct ditches, swales or other drainage structures. If you notice someone blocking a stormwater runoff structure, please report it to the Engineering Department at 941-882-7410.

IT IS IMPORTANT TO KNOW IF YOU DO NOT HAVE FLOOD INSURANCE, RELIEF FROM THE GOVERNMENT ONLY COMES IF THE PRESIDENT OF THE US DECLARES A FEDERAL EMERGENCY IN SARASOTA COUNTY, AND IN THE FORM OF GRANTS OR SMALL BUSINESS LOANS THROUGH THE SMALL BUSINESS ADMINISTRATION. SOME FEMA FUNDS MAY BE AVAILABLE, BUT ARE VERY LIMITED.

PREPARE BEFORE

Home Sweet Home: Make it Strong

There are several things you can do to make your home more capable of surviving hurricane-force winds:

- Anchor the roof. If built before 1994, a gabled roof should be braced at the ends with horizontal and vertical beams. Wood sheathing should be behind the stucco of the triangular gable end walls.
 - Brace entry and garage doors with foot and head bolts with a minimum 1-inch bolt throw length. The failure of the entry or garage door causes about 80 percent of residential hurricane damage. It may be worth the investment to purchase hurricane-resistant doors.
 - Cover windows with high-impact shutters or boards. Pick up anything loose outside that can be blown through a window in high winds. **Any size object can become a projectile.**
 - Have a safe room, preferably one in the center of the home without windows or glass doors. It can be a bathroom or closet.
 - The most vulnerable areas of a house are entryways, openings and external surfaces. Opt for heavier doors and install secure hinges and latches.
 - Talk to a local contractor or your local building department about preparing your home for a major hurricane. They are familiar with ways to prevent extensive damage to your home. Small changes can save thousands of dollars in damage.
 - Trim trees and shrubs around your home to minimize the risk of broken branches and debris.
 - Clear loose and clogged rain gutters and downspouts to prevent misdirected flooding.
 - For more ideas about protecting your property, visit www.flash.org or mysafeflorida.org. Also visit FEMA at fema.gov and click on the tools provided by FLASH. The City also offers property protection advice, call 941-882-7412 for more information.
2. Do I have the proper amount of flood insurance? Call your local agent to verify. Remember, flood insurance has a 30-day waiting period from the date of purchase.
 3. Is my home properly boarded up?
 4. What kind of flood and hurricane retrofits are available for my home?
 5. Are end gables securely fastened to the rest of the roof?
 6. Are double entry doors secured at the top and bottom?
 7. Has the garage door been properly secured? Garage doors are typically the most vulnerable part of a house. Specialty braces and support kits can help address this issue.
 8. Are windows protected by storm shutters? Permanent storm shutters offer the best protection for windows and doors. A second option is to board up your windows with 5/8" marine plywood, cut to fit and ready to install. Tape does not prevent window glass from breaking.
 9. Is the roof fastened to the walls with hurricane straps? Install straps or additional clips to securely fasten your roof to the frame structure. This will reduce roof damage.
 10. Is the main electric panel board located above potential flood waters?
 11. Are electric outlets, switches, water heater, washer and dryer located above potential flood waters?
 12. Is my fuel tank anchored securely?
 13. Is my boat/marine craft secure?

Checklist questions for homeowners:

1. What is my flood zone and evacuation zone? Call 941-882-7412 to find out. They are different! Zones A, AE, X, and X Shaded are flood zones, while zones A,B, and



PREPARE BEFORE

Prepare before the storm by collecting the following items (not exclusive):

- Cash and rolls of quarters, traveler's checks. Banks may not be open after a destructive storm.
 - Two weeks worth of bottled water and nonperishable food, along with a manual can opener. Plan on 1 gallon of water, per person, per day, plus a gallon of water per pet, per day. Also store enough water to cook.
 - People and pet food (at least a several-day supply of non-perishable food). Keep canned food in a cool dry place.
 - Battery-powered or hand-crank radio and a NOAA weather radio with tone alert.
 - Cell phone with chargers and a backup battery in case of power failure.
 - A flashlight for each member of the family, as well as extra batteries.
 - First-aid book and first-aid kit. Know basic emergency procedures, as emergency services may be delayed due to downed power lines or trees.
 - A cooler for food and another for ice. Fill up cooler for ice to the top, and fill refrigerator with ice as well.
 - Plastic tarp and duct tape for temporary roof or window repair.
 - Mops, buckets, towels and disinfectant.
 - Special items for infants, children and pets such as toys, books, games, puzzles or other activities.
 - Dust mask (to help filter contaminated air) and covid masks.
 - Moist towelettes, hand sanitizer, garbage bags and plastic ties (for personal sanitation).
 - Wrench or pliers (to turn off utilities).
 - Manual can opener (for food).
 - Local maps if you are not completely familiar with the area.
 - Prescription medications. About half of all Americans take a prescription medicine every day. An emergency can make it difficult for them to refill their prescription or to find an open pharmacy. Organize and protect your prescriptions, over-the-counter drugs, and anti-diarrhea medication, antacids or laxatives.
 - Prescription eyeglasses and contact lens solution.
 - Infant formula, bottles, diapers, wipes and diaper rash cream.
 - Sunscreen and bug repellent.
 - Important family documents such as copies of insurance policies, identification and bank account records saved electronically or in a waterproof, portable container.
 - Sleeping bag or warm blanket for each person.
 - Complete change of clothing appropriate for the climate and sturdy shoes (such as tennis shoes or boots).
 - Fire extinguisher.
 - Matches in a waterproof container.
 - Feminine supplies and personal hygiene items.
 - Mess kits, paper cups, plates, paper towels and plastic utensils.
 - Paper and pencils, pens.
 - Generator and extra gas for generator (store gas in a non-flammable cabinet). Gas stations may run out of gas days before and after the storm.
 - Comfort and priceless items.
 - Protective gear like hats and gloves if it is cold outside.
 - Safety gear such as a multi-purpose tool and a whistle.
 - Critical documents.
 - Clean and fill all bathtubs with water.
- A black rolling suitcase is open, revealing a collection of items packed inside. Visible items include a brown teddy bear, a green and yellow striped shirt, a pink and white striped shirt, a blue and white striped shirt, a green jacket, a black hair dryer, and a black multi-purpose tool. The suitcase is sitting on a light-colored carpet.



PREPARE BEFORE

Do you have a pet plan?

Whether you stay at home or go to a shelter (all are pet friendly in Sarasota County), here are some tips to help your furry friends weather the storm:

- Have a pet carrier and a kennel available. Your pet should be comfortable staying in the kennel for a few days.
- Do not leave your pet outside during or after the storm.
- Be sure your pet has current vaccinations and a collar with license and rabies tags, as well as an identification tag on them. It can be very easy for pets to escape before/during or after a hurricane. Animals with microchips for identification have a much better chance of being returned to their owners if they become separated.
- Prepare an easily cleaned area away from windows to keep pets during the emergency.
- During the storm, separate pets from each other, even if they are friendly and accustomed to being together.
- Calming products such as a Thundershirt (pictured above) may help ease your pet's anxiety. These should be tried out on your pet when they are already calm, before a storm event.
- Be aware that pets react to storms differently than humans, so they may act strange during the storm. Keep pets secure during the storm in the event that a window is broken and possibly provides an exit.
- County evacuation centers (shelters) allow dogs and cats; they will be placed in a kennel area away from the general public. Bring your pet's food, water, collar and leash, medicine and waste bags, and be prepared to care for your pet while at the shelter.
- Stock up on pet food, newspapers, cat litter, plastic bags, disinfectant and other supplies for use after the storm.



BE INFORMED

NOAA weather radio - Provide valuable hurricane information as well as vital warning information for tornadoes. These special radios can be purchased online or at a home improvement store.

Web-based hurricane information - City of Venice home page provides up to date information on the storm, including evacuations, flood zone, and Evacuation Centers and Transportation Plans.

Evacuation center - Evacuation centers are opened for the single purpose of protecting life and will provide 20 sq. ft. per person of floor space. There are no cots, pillows or blankets provided. Evacuees must bring their own bedding and supplies.

Family Emergency Communication Plan

Your family may not be together when a hurricane occurs, so it is important to know how to contact one another and how to get back together. Keep important numbers written down in your wallet in case you cannot access the contact list in your phone. Landline and cellular phone systems are often overwhelmed following a disaster, so you may need to use text messages and social media. Designate an out-of-town contact who can help your household reconnect. Be sure to practice your plan with your family. Get more information by downloading Be Smart Create Your Family Emergency Communication Plan or visit ready.gov/make-a-plan.

Write down any important phone numbers on your Hurricane Preparedness Checklist so you can access them easily.

PREPARE BEFORE

Get ready now

- Begin stocking up on bottled water, canned goods, medications or any other items that may be difficult to obtain right before or a week or two after the storm.
- If you have a barbecue grill, stock up on charcoal and matches. Keep them in a dry place.
- Go over your hurricane preparation and evacuation plan with your family. Let out-of-town relatives know what you'll be doing during the storm.
- If you plan to stay in a shelter, drive to the various shelters beforehand so that hours before an impending storm, when Sarasota County Emergency Management announces which shelters will be open, you can confidently and easily get there.
- Purchase a battery-operated radio, flashlights and other items, and have spare batteries on hand.
- Determine if a back up power supply is needed such as a generator.
- Have your insurance and other important papers in a safe, waterproof container that you can take with you if you leave home.
- Have a tarp, duct tape, screening tools, nails and other emergency equipment on hand.
- Stock up on plastic trash bags and toiletries.
- Talk to your neighbors about their hurricane plans and help any elderly or impaired residents with their yard if needed.

- If you are concerned that your home is in a flood-prone area, store sandbags or bags filled with garden mulch to place around your house before the storm. The mulch can later be used in the garden.
- Think about investing in two-way radios in the event that cell service is unavailable after the storm.

When a hurricane watch is announced for the area:

- Watch local TV news, check online weather sites like NOAA, monitor the Facebook pages of the City of Venice and Sarasota County Emergency Services, download weather apps to your device, and listen to the radio for information.
- Begin collecting all loose items from your yard and porch, including items in lanais and pool cages. Even small items picked up by strong winds can break a window or lodge in a roof or other part of a structure.
- Install shutters or plywood over your windows.
- Get your vehicle ready by filling the vehicle's gas tank. Gas stations may close or run out of gas. Move vehicles into your garage or under cover if possible. Always keep an emergency kit in your trunk.
- Have cash on hand.
- Do laundry.
- Fill the bathtub with water.
- Fill all available ice chests or coolers with ice.

- Charge cell phones and other devices. Have backup batteries for phones in case of an emergency.

During the storm:

- Do not go outside during this time. Stay indoors until you have heard an all clear from your local officials.

Immediately after the storm, stay inside because:

- There may be contaminated floodwaters, as well as potholes or live electrical wires under floodwaters that cannot be seen.
- Some traffic signals may not be functioning.
- Emergency services need the roads as clear as possible to respond to the number of calls they will get. Stay off the road unless absolutely necessary.
- Snakes, rats, ants and other vermin will be displaced from their usual habitat and try to share yours.

Additionally ...

- Do not swim or surf in the Gulf waters because there will likely be dangerous rip tide currents.
- Plan for being in heat without air-conditioning for an extended amount of time.



PREPARE BEFORE

Evacuate or Shelter-in-Place?

Do you live in a vulnerable area or home such as a mobile home or RV? Have you been ordered by officials to evacuate?

Visit ags3.scgov.net/knowyourlevel/ to locate where you live and work on a map. Determine whether or not your shelter is in an evacuation zone area, and if so, what level (A-E). If you need assistance with the map, contact 941-882-7412. If you are in an evacuation area, or live in a mobile home/RV, decide where you will go if ordered to evacuate. On the map, mobile home and RV neighborhoods are shown as having a special evacuation level. This means that all mobile home and RV residents must evacuate when any hurricane evacuation order is given in the City, regardless of the location of the evacuation area. Never stay inside a mobile home or RV to ride out the storm. Anchor mobile homes and RVs with tie downs and inspect tie downs annually.

Your choices for evacuation include:

1. The home of a relative or friend outside of the evacuation area.
2. A hotel/motel outside of the evacuation area. Be sure to make arrangements as soon as possible. Some hotels/motels have standing reservation hurricane programs and some relax their pet restrictions in an emergency.
3. Go to a public evacuation center. For more information, see page 14.
4. Leave the area entirely.

How do I know if I need to go to an evacuation center?

Local authorities will give evacuation orders for areas with significant risk of damage resulting from a high wind or surge event. **If you are not in one of the identified areas and do not live in a mobile home/RV, you can choose to remain in your home.** Evacuating unnecessarily can cause overcrowded evacuation centers and traffic jams.

If you must evacuate:

1. Do not panic. Move at a steady pace and ensure

you leave enough time to get to where you will weather out the storm. Do not take chances with your life by staying in an unsafe home/location or waiting until it is too late.

2. Check that your destination is not within a zone that has been ordered to evacuate.
3. Take enough supplies for your family and pets.
4. Take your pets.
5. Take important papers, such as your driver's license, medical information, insurance policies, and property inventories.
6. Take irreplaceable items such as family photos or keepsakes.
7. Let friends and family know where your destination is and check in often.
8. Make sure your neighbors have a safe ride.
9. Turn off your electricity, water and gas if officials order you to do so. Unplug all major appliances to protect them in case of a power surge.
10. Lock all windows and doors or other means of entry such as a pet door.

Shelter-in-Place

If you do not live in a vulnerable area or home and have not been ordered by officials to evacuate, you may choose to shelter-in-place. You may be able to do so if you live outside of a special flood hazard area in a home built under the 2002 Florida Building Code or after. Additional measures such as placing shutters over windows or having doors that can withstand wind pressure and debris impact can make your home a safer place to ride out a storm.

Your shelter-in-place location should contain enough nonperishable food, blankets, communication equipment (such as radios), alternate power sources, first aid supplies, necessary medications, and any required durable medical equipment to allow self – sustenance for a minimum of 72 hours.

PREPARE BEFORE

Help a Neighbor

- People with disabilities, in poor health (either mentally or physically), or those without the support of family and friends should plan ahead for an emergency. They may need special assistance from family members, friends, neighbors, or social service agencies. Please ask for help if you need it or call 941-861-5000 if you need help. Volunteer if you are able to do so.
- Remember that older adults who are also caregivers may require outside assistance. Excessive stress and anxiety can contribute to increased episodes of illness, particularly those with heart disease or other illnesses.
- If an older adult lives in a nursing home, assisted living facility or residential facility, the administrator should be contacted to learn about the disaster plan for that facility.

Home Healthcare and Homebound Patients

- Tell your home health agency and oxygen company where you will be during a hurricane. Ask them about their plans to provide care before, during, and after a hurricane.
- If you are homebound, but not under the care of a home health agency, contact your physician to determine your best plan of action.
- If you require respirators or other electric-dependent medical equipment, you should make arrangements with your physician. You should also register with FPL at fpl.com/help/health-programs.html.
- If you evacuate, remember to take medications, written instructions regarding your care, special equipment, and bedding with you.
- If you will need assistance in an evacuation or need to go to a special needs/medically dependent shelter, please register at scgov.net, keyword search “medical needs program.” Online applications will stop being accepted 60 hours prior to expected landfall. Examples of qualifying medical needs include the use of oxygen or use of medical equipment that requires electricity.
- Special needs/medically dependent shelters do not provide hands on medical care, only medical monitoring. Bring one caregiver with you.



PREPARE BEFORE

Evacuation Center/ Hurricane Information

In the event of a hurricane watch, Sarasota County will open all identified evacuation centers (hurricane shelters) at the same time. All evacuation centers will be pet friendly. The following animal species will be accepted into shelters: dogs and cats. Your pet must be kept in a carrier. Current vaccinations records will be required. Hurricane evacuation centers are not hotels and will not be able to provide any conveniences or luxuries. **You will have no privacy**, it will be crowded, and meals may be delayed. There will be very limited space, approximately 20 sq. ft. per person in a public classroom or hallway. Medically dependent (upon prior registration) will have approximately 60 sq. ft. for themselves, one caregiver and all necessary belongings. Smoking is prohibited. There may not be power available during the storm. Evacuation centers cannot provide bedding, cots or blankets. No weapons, alcohol or illegal drugs. Children under 18 MUST BE attended by an adult at all times. Parents/guardians must remain on premises with children.

GOING TO AN EVACUATION CENTER SHOULD ALWAYS BE CONSIDERED A LAST-RESORT MEASURE.

Never go to an evacuation center until local officials announce it is open. Evacuation center information will be updated on the County and City websites (scgov.net and venicegov.com), on local radio and television stations, and on the County and City Facebook accounts.

HURRICANE EVACUATION CENTERS

Taylor Ranch Elementary School	2500 Taylor Ranch Tr. (off U.S. 41), South Venice
North Port High School	6400 W. Price Blvd., North Port
Heron Creek Middle School	6501 W. Price Blvd., North Port
Woodland Middle School	2700 Panacea Blvd., North Port
Atwater Elementary School	4701 Huntsville Ave., North Port
Fruitville Elementary School	601 Honore Ave., Sarasota
Brookside Middle School	3636 S. Shade Ave., Sarasota
Southside Elementary School	1901 Webber St., Sarasota
Riverview High School	1 Ram Way, Sarasota
Booker High School	3201 N. Orange Ave., Sarasota
Phillippi Shores Elementary School	4747 S. Tamiami Trail, Sarasota
Gulf Gate Elementary School	6500 S. Lockwood Ridge Road, Sarasota

What to Bring to an Evacuation Center

- Flashlight (in case your center loses power).
- Your insurance, Medicare or Medicaid cards, driver license or photo ID.
- Your children's immunization and other important health and insurance records.
- Each family member's medications, along with dosage information and physician's contact information.
- Drinking water.
- Snacks, special food items and non-perishable foods.
- Bedding and pillows.
- Book or electronic entertainment items with headphones and chargers.
- Change of clothing and durable shoes such as tennis shoes or boots.
- Personal hygiene items (including hand sanitizer and wipes).
- Games/comfort items for children.
- First-aid kit.
- Pet items such as cages, food, water, leashes, pee pads, etc.
- Personal cooler with ice for special needs/medications.

PREPARE BEFORE

Transportation Plan for Evacuation Centers

For those who cannot drive or otherwise be transported by family, friends or neighbors, Sarasota County will provide last-resort, free bus transportation for you and your pets (along with a limited amount of supplies) to and from a general population evacuation center. This program is activated only when the County has a declared state of emergency, an activation is ordered, and evacuation centers are opened.

Transportation will only be offered at designated rally points. Information/instruction will be provided at each rally point.

No registration needed. However, you can complete the optional online registration form at scgov.net (keywords "transportation plan"). The online registration process will stop when landfall is expected within 60 hours. All County libraries are available to help with online registration for those without a computer. You can also call 941-861-5000. The form will include guidance for those who cannot drive or walk to a designated rally point. **If you have special medical needs (require an oxygen tank, a lift assist from a wheelchair, etc.), you must register separately as a medically dependent person. This can be done now at or scgov.net call 941-861-5000.**



Residents who preregister will receive an automated telephone message with information about the location of rally points and when the pick up will be.

Venice area rally points include:

Venice Community Center, 326 Nokomis Ave. S., Venice; **Garden Elementary School**, 700 Center Road; Venice; **Laurel Park**, 509 Collins Road, Nokomis; and **Pine View School**, 1 Python Path, Osprey. Go to scgov.net for a full list.

Keep in mind ...

- **Rally points may change depending on the location/severity of a storm.**
- Transportation will be provided by Sarasota County Area Transit and school district buses.
- Space on buses will be limited.
- Baggage is limited to two carry-on sized bags per person that can be stored under a seat or held in lap.
- Pets must be in a crate or carrier, and you must bring all pet supplies.
- Passengers cannot specify what shelter they will be transported to. Your return home could be delayed.

Drive to a rally point:

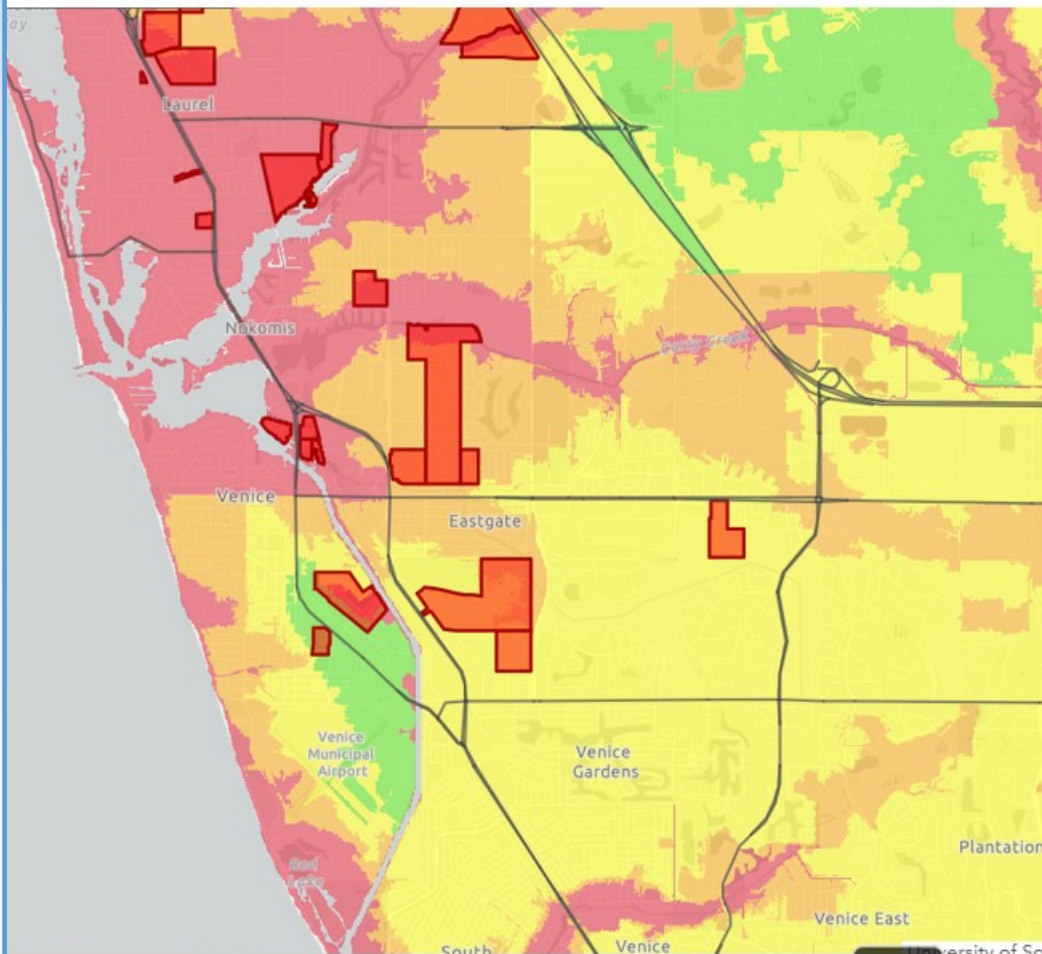
- Drive locally to a rally point and park vehicle.
- Receive transportation to an evacuation center.

Take an existing bus route to a rally point: Pick-up transportation to a rally point and center via Sarasota County Area Transit disaster bus route (SCAT's modified Sunday bus route). Visit scgov.net for schedules.

Important: All transportation will cease when landfall is expected within eight hours.

PREPARE BEFORE

Evacuation Levels for the Venice Area



Evac Level

-  Evac Level A
-  Evac Level B
-  Evac Level C
-  Evac Level D
-  Evac Level E
-  Special Evacuation Level
- 

Storm Surge Potential

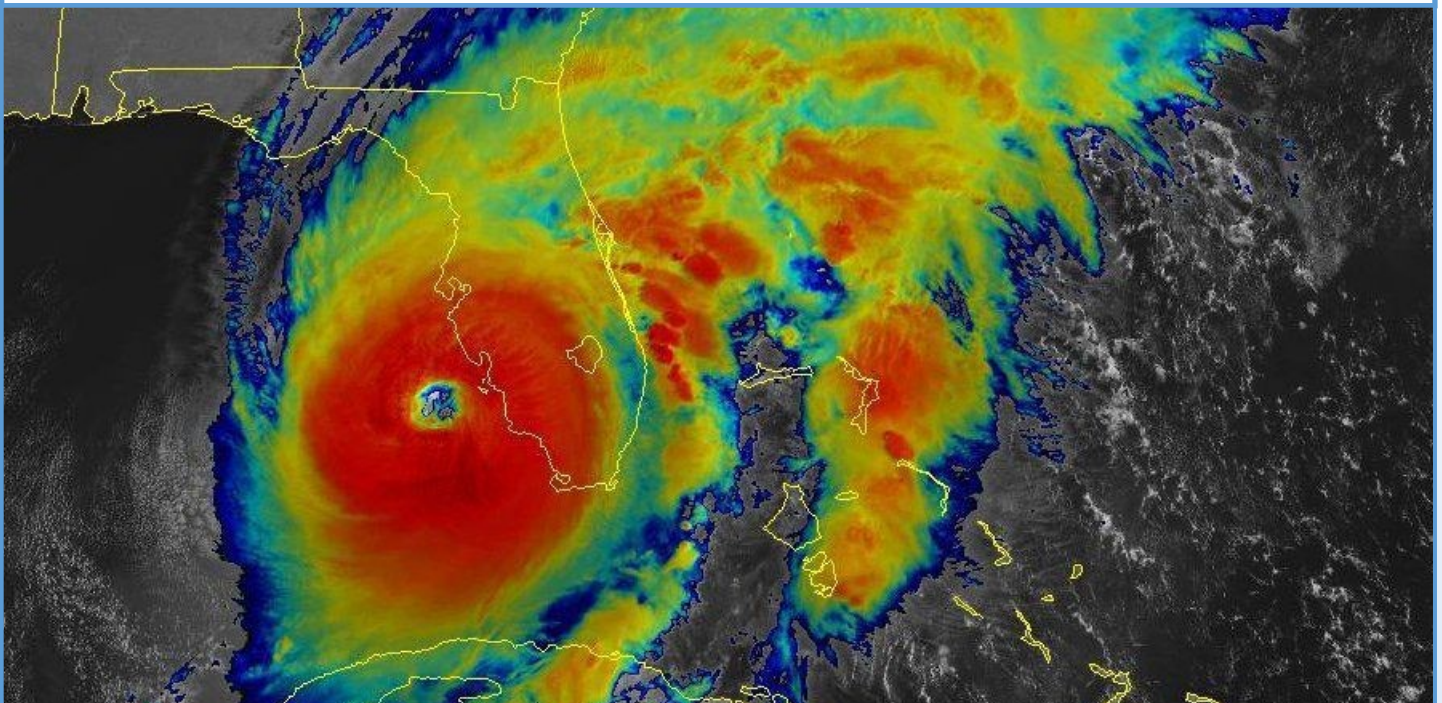
- Red = Cat 1 Surge height of 7ft
- Orange = Cat 2 Surge height of 15ft
- Yellow = Cat 3 Surge height of 26ft
- Green = Cat 4 Surge height of 33ft

Know the Evacuation Level for your home! Visit <https://ags3.scgov.net/knowyourlevel/> and type your street address in the top right search bar. For more assistance, call 941-882-7412 or email Christina Rimes at crimes@venicefl.gov.

DURING THE STORM

Staying calm during the storm is one of the most important things you can do, whether you are at a shelter or at your home. Panic will breed panic, so it is important to stay calm.

- **DO NOT GO OUTSIDE UNLESS THERE IS AN EMERGENCY.** Stay indoors at your home or shelter until the “all clear” has been given. If there is damage in your house, relocate to a safer area of the house. Stay away from windows and glass doors and stay on the lowest floor.
- Keep your emergency supply kit in a place you can easily access.
- Listen to the radio or TV for updates on the hurricane. Remember that phone service or data may not be available during the storm. The safest most reliable form of communication from officials is a weather radio.
- Stay inside. Even if it looks calm, don’t go outside. Wait until you hear or see an official message that the hurricane is over. Many times during a hurricane the eye of the storm can seem eerily calm.
- Stay away from windows. You could get hurt by pieces of broken glass or flying debris during a storm. Stay in a room with no windows or go inside a closet.
- Be ready to leave. If emergency authorities order you to leave or if your home is damaged, you may need to go to a shelter or a neighbor’s house.
- If power is lost, keep the refrigerator closed to keep cold air trapped and delay spoilage of perishable food. Try to limit usage if possible.
- If you use a portable generator, follow all the manufacturer’s instructions. Generators should be properly grounded to prevent electrical shock and should never be operated indoors, in garages, basements or outdoors near any windows, doors or vents. Because generators produce carbon monoxide (CO), make sure you have a working CO detector in your home. Keep generators at least 20 feet away from doors and windows. **Never connect a portable generator to building wiring.** There is an extreme danger of generator backfeed for the general public and utility workers. Plug appliances directly into the generator.
- If there is a threat of flooding, turn off the electricity at the main breaker. If power is lost, unplug major appliances.
- ***Residents should still call 911 for any emergency, as calls are still recorded and placed on a priority list.***



AFTER THE STORM

Do not leave your shelter until local officials have given the “all clear.” Many people are injured or killed walking or driving around after the storm. Live power lines, gas leaks, dangling tree branches, flooding, damaged roadways and dangerous wildlife (e.g. snakes, alligators) can be life-threatening. Do not go sight-seeing unnecessarily; the added traffic may prevent essential personnel for getting people who need their help. Do not allow children or adults to play in standing water after an event, as the water may be contaminated or harbor vermin like ants and snakes. As shown in the photo, ants have been seen to form “islands” in flood waters. Do not allow pets to roam



freely. It is possible electric and phone services may not be available up to several weeks. Fuel may not be available. Transportation of groceries and other necessities may not be possible right away. It could take stores as little as a few days to months to reopen and be fully stocked. The time after a hurricane will be extremely stressful and it could take months for this stressful “atmosphere” to die down. Be sure to take mental breaks in the weeks and months following a destructive storm. A constant stream of storm damage images can lead to unnecessary stress and anxiety. **If you need someone to talk to, call 211 to speak to a live person who can help you find mental health resources. Talking to a professional or loved one during this time can ease stress.**



Remember: Among the greatest dangers after a hurricane are downed power lines. Never touch them. For safety’s sake, always assume that a fallen power line is live. Do not walk near, touch, or drive over any wires lying on the ground. To report any downed power lines, call 911 or FPL at 1-800-468-8243.

You can help emergency services by:

- Being prepared to be independent for several days.
- Making sure you have medications you normally take.
- Refraining from swimming or surfing in the Gulf waters due to rip tides.
- Refraining from driving on roads until they have been cleared of downed wires and debris.
- Moving over and allowing emergency vehicles to pass. If you come upon an emergency vehicle stopped on the road, move into the next lane if it is safe to do so. If it is not safe to change lanes, slow down as you go by. This is not just courtesy, it’s the law.

AFTER THE STORM

Cleaning Up

To help the City clean up after a storm:

- Separate garbage, construction debris, vegetation, household waste, large appliances and electronics, and place them in separate piles at the curb, **but not in the road**.
- Avoid stacking debris by utility poles, under power lines, on top of water meters or other connections by fire hydrants, by vehicles, next to mailboxes or fences or storm drains.
- Refrigerators, freezers, washers and dryers must have doors removed.
- Keep all debris for collection close to the road, just as you do during regular collections.
- Take breaks during cleanup efforts, especially if it is hot outside. Drink lots of water.



What items go in which piles?

Garbage: Spoiled food or contaminated recyclables, such as wet cardboard and paper, should be placed in cans or plastic bags and put at the curb.

Construction debris: Structural debris and bulky waste like building materials, drywall, lumber, carpet, furniture, mattresses and plumbing materials.

Vegetation: Yard waste such as tree branches, leaves and logs should be in one pile.

Household hazardous waste: Oil, batteries, pesticides, oil-based paints and stains, cleaning supplies, lawn chemicals and compressed gas.

Appliances: Refrigerators, washers, dryers, freezers, air-conditioners, stoves, water heaters and dishwashers. Remove all contents, such as food, clothes and dishes, and remove doors from appliances. Also, televisions, computers, radios, stereos, DVD players, phones and other devices.

Recyclables: Recyclables should be placed in their normal cart and placed at the curb, at least 6 feet away from other piles of trash.

If you need someone to talk to, dial 211 to speak to a live person who can help you find available mental health resources. Mental health help is available during this trying time.

STAY HEALTHY

- Throw out any food including canned items that were not maintained at a proper temperature or have been exposed to floodwaters. When in doubt, throw it out.
- Avoid drinking tap water until you know it is safe. If uncertain, boil or purify it first.
- Clean and disinfect everything that got wet. Mud left from floodwater can contain sewage, bacteria, and chemicals.
- Air out by opening all doors and windows whenever you are present. Leave as many windows open when you are not present as security concerns allow.
- Move out saturated porous materials such as mattresses or upholstered items, especially those with visible fungal growth.
- Tear out flooring, paneling, drywall, insulation, and electrical outlets saturated by floodwater.



AFTER THE STORM

Seeking emergency assistance can seem daunting after a storm, but here are some resources for emergency assistance. Below is a list of some emergency assistance websites. Be watchful for scammers trying to steal your private information. After applying for assistance check your email often for important updates. Download a QR Reader if needed (one that has an adjustable frame scanner works best).

Individual or household programs through FEMA: disasterassistance.gov



Transition Shelters through FEMA: fema.gov/assistance/individual/sheltering-housing-options

Home or personal property loan through the Small Business Administration:

disasterloanassistance.sba.gov/ela/s/



Mortgage insurance for disaster victims Section 203H Loan through HUD: hud.gov/program_offices/housing/sfh/lender/lenderlist

FL Small Business Emergency Bridge Loan Program through the FL Department of Economic Opportunity: deosera.my.site.com/RebuildFloridaBusinessLoanFund/s/



Other various types of assistance through FloridaDisaster.biz: floridadisaster.biz/ManageContent?PageID=RECOVER

Emergency Solutions Grants Programs through HUD: hud.gov/program_offices/comm_planning/esg



National Center for Missing and Exploited Children: missingkids.org/ourwork/disasters

To find gasoline: tracker.gasbuddy.com/?q=Sarasota,%20FL



Title 1 Property Improvement Loans through HUD: hud.gov/program_offices/housing/sfh/title

To report a power outage: fplmaps.com/



STORM READY CHECKLIST

Tear off this checklist and post it in an area that is easily accessible. Remember to keep in mind your family's unique needs, as they may change.

Stock your emergency kit and "go bag" with:

- | | |
|---|--|
| <input type="checkbox"/> Important contact information for family, school, work, doctors, etc., including phone numbers and email addresses | <input type="checkbox"/> _____ |
| <input type="checkbox"/> Cell phone, extra battery, and chargers for electrical equipment | <input type="checkbox"/> At least a three-day supply of water and nonperishable food |
| <input type="checkbox"/> AM/FM radio/NOAA weather radio (extra batteries) | <input type="checkbox"/> Infant formula, diapers, and wipes |
| <input type="checkbox"/> _____ | <input type="checkbox"/> Pet food, supplies, and extra water |
| <input type="checkbox"/> _____ | <input type="checkbox"/> _____ |
| <input type="checkbox"/> Medications for at least one week and copies of prescriptions | <input type="checkbox"/> Soap/disinfectant/sanitizer |
| <input type="checkbox"/> Extra eyeglasses/contact lenses | <input type="checkbox"/> Paper towels/moist towelettes |
| <input type="checkbox"/> Medical equipment/assistive technology and backup batteries | <input type="checkbox"/> Toilet paper |
| <input type="checkbox"/> First-aid kit | <input type="checkbox"/> Bleach |
| <input type="checkbox"/> _____ | <input type="checkbox"/> Toothbrush and toothpaste |
| <input type="checkbox"/> _____ | <input type="checkbox"/> _____ |
| <input type="checkbox"/> Photo ID (e.g., driver's license, passport) | <input type="checkbox"/> Extra warm clothes if cold weather is expected |
| <input type="checkbox"/> Cash and credit cards | <input type="checkbox"/> Sturdy shoes / extra socks for rainy season |
| <input type="checkbox"/> Personal records (e.g., birth certificates and marriage certificates) | <input type="checkbox"/> Blankets or sleeping bags |
| <input type="checkbox"/> Medical records | <input type="checkbox"/> _____ |
| <input type="checkbox"/> Financial information (e.g., bank account or credit card information) | <input type="checkbox"/> _____ |
| <input type="checkbox"/> Property records (e.g., insurance policies, deed, or lease) | <input type="checkbox"/> Items like books, puzzles, and a favorite stuffed toy |
| <input type="checkbox"/> Waterproof, portable container for important documents | <input type="checkbox"/> Photo albums, valuables |
| <input type="checkbox"/> _____ | <input type="checkbox"/> _____ |
| <input type="checkbox"/> _____ | <input type="checkbox"/> _____ |
| <input type="checkbox"/> Flashlight | <input type="checkbox"/> _____ |
| <input type="checkbox"/> Multipurpose tool | <input type="checkbox"/> _____ |
| <input type="checkbox"/> Matches or lighter in waterproof container | <input type="checkbox"/> _____ |
| <input type="checkbox"/> Whistle | <input type="checkbox"/> _____ |
| <input type="checkbox"/> _____ | <input type="checkbox"/> _____ |

STORM READY CHECKLIST

When a tropical storm or hurricane watch is issued, it's important to stay informed. Tune in to channels:

Check for alerts on apps: FEMA App and AlertSarasota

In case of evacuation, grab your "go bag" and leave immediately.

Use evacuation route:

The closest shelter is:

Meet family at:

Make sure to take these important numbers with you:

Family member's name:

Phone #:

Email:

Family member's name:

Phone #:

Email:

Local contact's name:

Phone #:

Email:

Out-of-state contact's name:

Phone #:

Email:

Primary physician's name:

Phone #:

Email:

Hospital phone #:

Insurance company's phone #:

Any other important numbers:

FEMA helpline: 1-800-621-FEMA

Red Cross helpline: 1-800-733-2727

Police Department non-emergencies: 941-486-2444

Fire Department non-emergencies: 941-480-3030

After hours: 941-882-7510

Water/sewer emergency: 941-486-2770

Power outage - FPL: 1-800-4-OUTAGE (468-8243)

Sarasota County Contact Center: 941-861-5000, TTY 711 or 1-800-955-8771